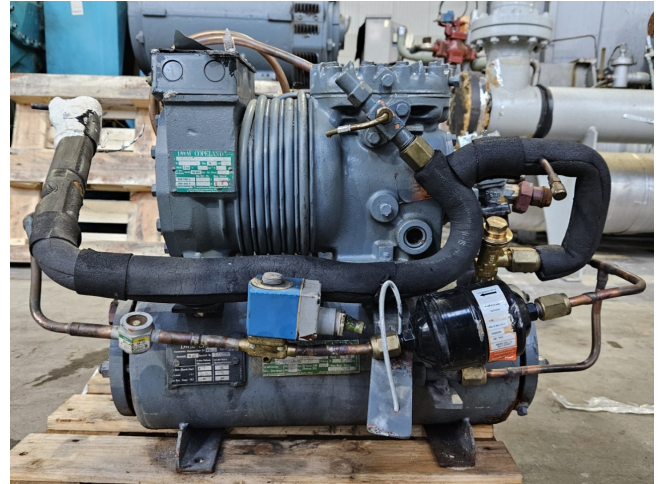


DWM DKSJB-100/EWL/000 Condensing unit

Specifications

Brand	DWM
Type	DKSJB-100/EWL/000 Condensing unit
Refrigerant	Freon
kW at -5°C/+40°C	3,9
kW at -10°C/+40°C	3,2
kW at -20°C/+40°C	2,0
kW at -30°C/+40°C	1,1
kW at -40°C/+40°C	0,5
kW at -45°C/+40°C	0,3
Pressure gauges	✓
Hp/Lp/Op	
Condensing pressure switches	✓
Liquid line filter drier	✓
Sight Glass	✓
Solenoid Valve	✓
Control panel	✓
m3 / h	6,33
Condensing Unit	✓
Sizes	780x500x530 mm (LxWxH)
Stock	1



Description

Used DWM DKSJB-100/EWL/000 Condensing unit

Used DWM / Copeland water cooled condensing unit on Freon. Complete with DWM DKSJB-100/EWL/000 semi-hermetic reciprocating compressor, DWM WR2-KSJ-100H-LX/EWL shell and tube condenser, liquid line filter drier and pressure and safety switches/gauges and a control cabinet. The compressor has a displacement of 6,33 m³/h.

*Why choose for HOSBV? Were not only the largest used refrigeration specialist in Europe, but also, we deliver all equipment including an extensive test, warranty and industrial cleaning.

*Optional we can also perform a new paint job and arrange the logistics.

